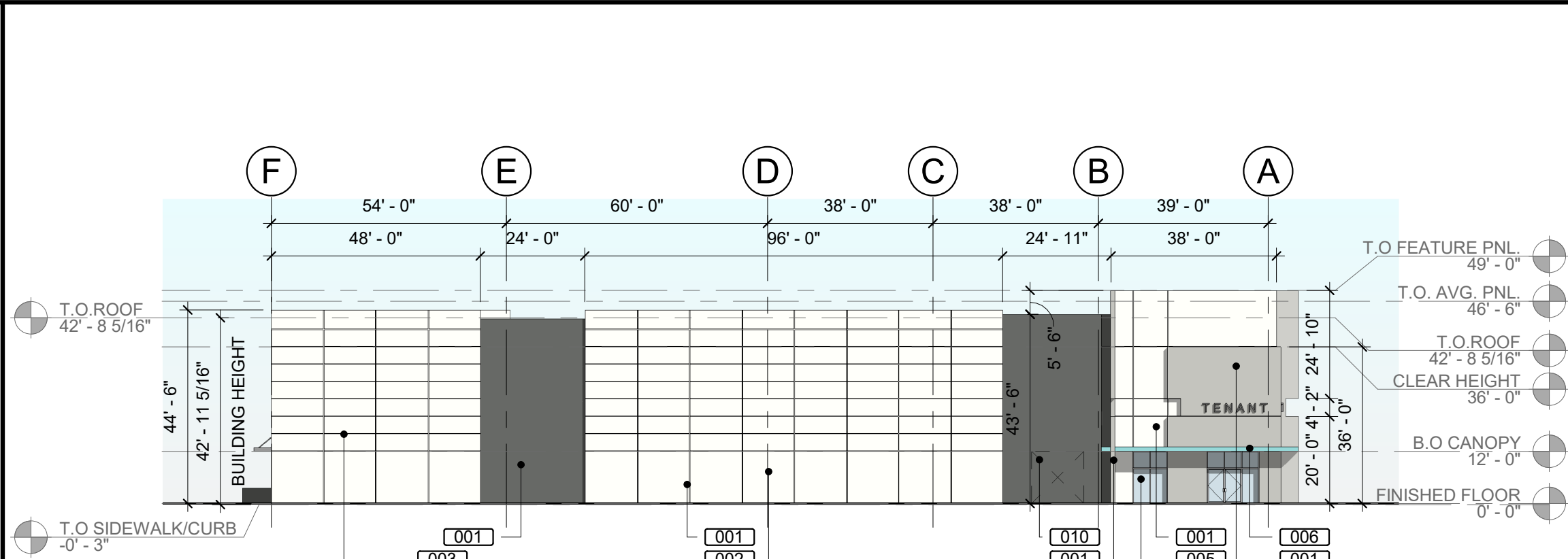


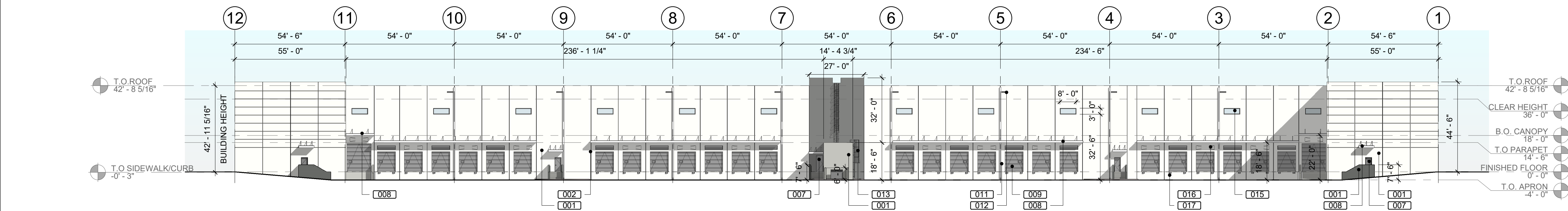
4 BUILDING 1 EAST ELEVATION

A-2.10 SCALE: 1" = 30'-0"



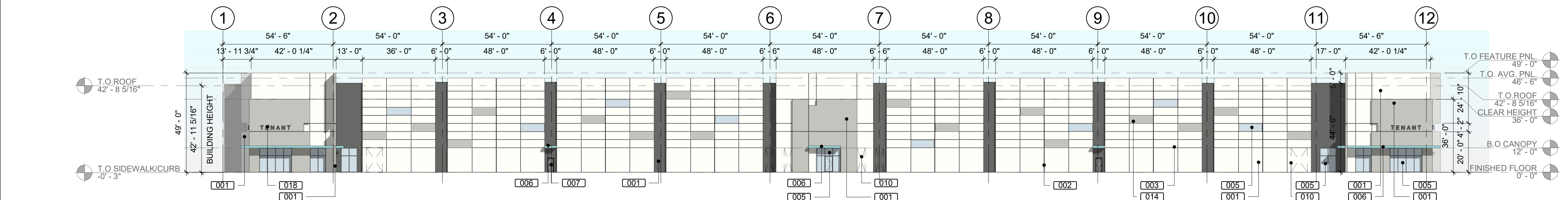
3 BUILDING 1 WEST ELEVATION

A-2.10 SCALE: 1" = 30'-0"



2 BUILDING 1 NORTH ELEVATION

A-2.10 SCALE: 1" = 30'-0"



1 BUILDING 1 SOUTH ELEVATION

A-2.10 SCALE: 1" = 30'-0"

GENERAL ELEVATION NOTES

1. PROVIDE MEDIUM TEXTURED ACRYLIC COATING WITH INTEGRAL BASE BUILDING COLOR (TEX-COAT XL-70 OR APPROVED EQUAL) ON ALL EXTERIOR WALLS EXCEPT DOCK AREA WALLS. ACCENT COLORS AND DOCK AREA WALLS TO BE PRIMED AND HAVE TWO (2) COATS OF COMMERCIAL QUALITY GRADE LATEX PAINT. WHERE DARK COLORS ARE USED, PROVIDE SATIN FINISH LATEX.
2. MISCELLANEOUS METALS INCLUDING EXTERIOR EXPOSED METALS (I.E. HANDRAILS, LADDERS, BOLLARDS) TO HAVE ONE (1) COAT OF PRIMER AND TWO (2) COATS OF COMMERCIAL QUALITY ENAMEL PAINT.
3. CONTRACTOR TO PROVIDE SAMPLES OF COLORS OF ACTUAL BUILDING FOR OWNERS FINAL REVIEW.
4. REFER TO ELECTRICAL PLAN FOR LIGHT FIXTURE SPECIFICATIONS.
5. RETURN ALL REVEALS AT PANEL OVERLAP. TYP. REFER TO ENLARGED ELEVATION FOR COLOR PLACEMENT.

GENERAL NOTES

1. ALL CONCRETE WALLS TO BE TREATED WITH TEXTCOTE MEDIUM TEXTURE.
2. ALL STOREFRONT TO BE CLEAR ANODIZED AND GLAZED PER MIAMI-DADE REQUIRED HURRICANE RESISTANCE WITHOUT THE USE OF SHUTTERS.
3. ALL FUTURE TENANT SIGNAGE TO BE PERMITTED SEPARATELY.
4. 6" TALL WHITE ADDRESS NUMBERS ARE TO BE PLACED OVER EVERY TENANT ENTRANCE PER FLORIDA FIRE PREVENTION CODE.

KEYNOTE LEGEND

- | | |
|-----|---|
| 001 | TILT-UP CONCRETE WALL (TYP. PAINTED) |
| 002 | PANEL JOINT |
| 003 | 2" REVEAL PATTERN |
| 005 | TINTED GLASS IN IMPACT RESISTANT ALUMINUM STOREFRONT SYSTEM |
| 006 | PAINTED CONCRETE CANOPY |
| 007 | METAL MAN DOOR |
| 008 | ALUMINUM CANOPY |
| 009 | STEEL OVERHEAD DOOR |
| 010 | KNOCK-OUT PANEL |
| 011 | METAL COLLECTOR AND DOWN SPOUT (PAINT TO MATCH ADJACENT WALL) |
| 012 | EMERGENCY OVERFLOW SCUPPER |
| 013 | STEEL LADDER AND CAGE WITH LOCKABLE GATE |
| 014 | 1" RECESS (PAINTED) |
| 015 | CLERESTORY WINDOW |
| 016 | FUTURE LOUVER KNOCK-OUT |
| 017 | RUBBER DOCK BUMPER (TYP.) |
| 018 | TENANT SIGNAGE |

PAINT LEGEND

- | | |
|------|--|
| PT-1 | SHERWIN WILLIAMS
SW 7757
HIGH REFLECTIVE WHITE |
| PT-2 | SHERWIN WILLIAMS
SW 7065
ARGOS |
| PT-3 | SHERWIN WILLIAMS
SW 7068
GRIZZLE GRAY |
| PT-4 | SHERWIN WILLIAMS
SW 9045
BORA BORA SHORE |

NOTE:
TO THE BEST OF THE ARCHITECTS KNOWLEDGE, THE PLANS AND SPECIFICATIONS COMPLY WITH THE APPLICABLE MINIMUM BUILDING LOCAL AUTHORITY IN ACCORDANCE WITH THIS SECTION AND CHAPTER 633 CODES AND THE APPLICABLE FIRE-SAFETY STANDARDS AS DETERMINED BY THE , FLORIDA STATUTES.

DRC SUBMITTAL
12/17/2025

No.	Date	Description

Drawing Title:
BUILDING 1 -
ELEVATIONS

Scale: As Noted
Project No: 25046
Date: 11/06/2025

Principal: CSM
Project Director: MB
Project Manager: MB
Drawn by: PC
Checked by: MB

Sheet No.
A-2.10